



# ISTITUTO GEMMOLOGICO NAZIONALE

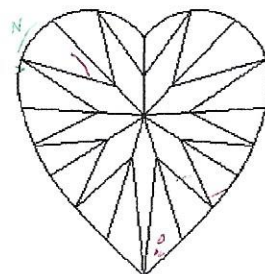
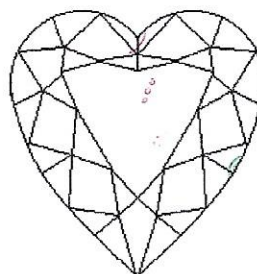


NATURAL DIAMOND

REPORT N. 26784

ROME, 16/January/2019

SHAPE - CUT:	Heart - brilliant
MASS ct.:	2.34
COLOUR GRADE:	F
CLARITY GRADE (10X):	SI-1
MEASUREMENTS mm.:	8.94 x 9.30 x 5.00
TABLE-CROWN-PAVILION %:	62 - 9 - 40.5
TOTAL DEPTH %:	53.8
CROWN and PAVILION ANGLE:	26.6° - 40.0°
GIRDLE:	Faceted - thin to slightly thick
CULET:	Small
POLISH GRADE:	Fair
SYMMETRY GRADE:	Good
FLUORESCENCE:	Medium



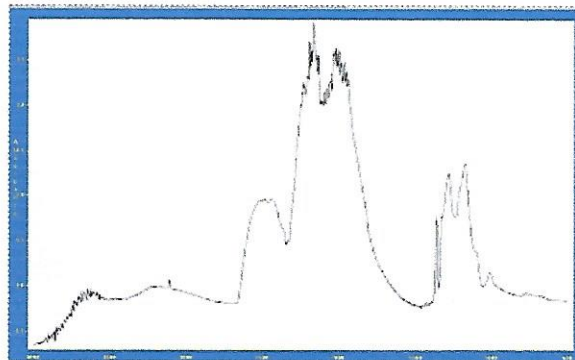
Red symbols: internal characteristics

Green symbols: external characteristics

Insignificant details, visible under high magnification only, are not shown

Diagram is an approximate representation of the diamond, and symbols shown indicate type, position and approximate size of clarity characteristics. Key to symbols behind

OBSERVATIONS: I.R. spectrophotometric analysis: type I diamond



CLARITY GRADE: IF VS1 VS2 VS1 VS2 SI1 SI2 I1-P1 I2-P2 I3-P3

COLOUR GRADE: D E F G H I J K L M N O P Q R S-Z FANCY COLOUR

  
Dr. F. Butini, GG, FGA

  
E. Butini, GG, FGA